

CUSTOM CONTENT

APRIL 16, 2018

M O S T I N F L U E N T I A L

# Women Attorneys



# CONGRATULATIONS TO WOMEN MAKING A DIFFERENCE EVERYWHERE



TOGETHER WE ARE UNSTOPPABLE  
JOIN US AT [TRIALBYWOMAN.COM](http://TRIALBYWOMAN.COM)

**CZR**

CARPENTER, ZUCKERMAN & ROWLEY  
Trial Lawyers for Justice

TRIAL BY  
W O M A N

## MOST INFLUENTIAL WOMEN ATTORNEYS

*Letter from the Publisher*

**W**elcome to the 2018 edition of our annual special supplement honoring LA's most influential women attorneys.

According to the American Bar Association, 36% of practicing attorneys today are women – and that number will continue to move toward balance when you consider that law school enrollment is currently 49% female.

Los Angeles is truly a national leader when it comes to influential women – and the field of law is no exception. There are some particularly stellar attorneys in the LA region who happen to be women and we've alphabetically listed 75 of the best of them here, along with some basic information about their careers, practice and some relevant recent successes they've achieved.

We assembled a committee of select individuals to analyze the many nominations we received this year.

These are the honorees we chose to recognize for exceptional legal skill and achievement across the full spectrum of responsibility, exemplary leadership as evidenced by the highest professional and ethical standards, and for contributions to the Los Angeles community at large.

Congratulations to the extraordinary women who made this list and thank you for working to keep the people and businesses of Los Angeles on the right track!

Best regards,

A handwritten signature in black ink that reads "Anna Magzanyan".

Anna Magzanyan  
Publisher & CEO



is proud to congratulate  
our partner



**Lucia Coyoca**

on being named among the *Los Angeles Business Journal's*  
Most Influential Women Attorneys

@mskllp msk.com  
los angeles | new york | washington, dc

# WARRIORS WITH HEART.

HIGH-ASSET DIVORCE  
COMPLEX MARITAL ESTATES  
HIGH-CONFLICT CHILD CUSTODY  
MOVE-AWAY CASES  
PRENUPTIAL AGREEMENTS  
POSTNUPTIAL AGREEMENTS  
COHABITATION AGREEMENTS

**MEYER, OLSON, LOWY & MEYERS, LLP**

congratulates

**DANA LOWY and ANNE SLUSSER**

on being selected to Los Angeles Business Journal's  
2018 Most Influential Women Attorneys list.



Los Angeles 310.277.9747 • Orange County 949.397.3977 • [MOLFAMLAW.COM](http://MOLFAMLAW.COM)

## MOST INFLUENTIAL WOMEN ATTORNEYS

**ANGELA AGRUSA***Partner*

DLA Piper LLP



Within the last twelve months, Angela Agrusa's work on the Bill Cosby case was the most closely followed in the news and her

legal impact continues well into this year and shows no signs of stopping. Agrusa was profiled last year by a number of publications acknowledging the significant victories that she achieved for Cosby in defending him against allegations of defamation across the country – decisions that help shape what lawyers, publicist, managers and individuals can say publicly when confronted with accusations of wrongdoing.

Agrusa, an experienced brand crisis civil attorney and trial lawyer, was convinced by Cosby himself to co-lead his defense in the highly publicized criminal case. And with what most lawyers would view as daunting and unwinnable, Agrusa, a long time feminist and former ACLU law clerk accepted the challenge. Agrusa, a lifelong believer in the protections uniquely important to the American legal system was determined to defend Cosby's rights to a fair trial without undermining or devaluing the rights of victims of sexual assault.

**ELENA BACA***Partner*

Paul Hastings LLP



Elena Baca is chair of Paul Hastings' Los Angeles office and co-vice chair of the Employment Law practice. Baca is recognized as a leading trial lawyer.

Her exceptional litigation track record and trial victories stand out in the legal marketplace not only for their sheer volume, but also the ways in which the decisions are shaping future law.

Frequently retained in high-profile, confidential and sensitive matters, Baca is often called upon to turn around cases prior to trial that have been mishandled or the stakes are just too high to leave with the client's current lawyers. Baca has established an impressive record of defense verdicts and arbitration wins representing a wide variety of corporate clients. Her litigation practice is primarily focused on employment related issues, such as employee mobility, wage and hour, and whistleblower issues. She is considered a "go-to" employment lawyer for many large employers with high-profile disputes involving high-level executives and contentious high-stakes litigation (including class action claims).

**MICHELE J. BEILKE***Partner*

Hunton Andrews Kurth LLP



Hunton Andrews Kurth's Michele Beilke knows how to make a difference for her clients. Whether litigating an employment dispute or a

pro bono case, for over two decades she has represented employers in California and produced victory after victory at the courthouse. With an unbeatable track record on both the state and federal levels, Beilke recently joined the Hunton Andrews Kurth team in Los Angeles as a partner in the firm's Labor and Employment group.

Beilke has extensive experience efficiently and effectively litigating single-plaintiff discrimination and multi-plaintiff cases in state and federal courts. She handles state and national wage-and-hour class actions, as well as discrimination and harassment claims under state and federal law. Beilke also counsels clients on critical California employment topics, including the FLSA, FMLA, ADA and WARN Act. Beilke has worked to shape how courts view and interpret Private Attorneys General Act (PAGA) claims, and she played a key role in one of the most notable recent PAGA cases.

**IVY KAGAN BIERMAN***Partner*

Loeb &amp; Loeb LLP



With decades of experience providing sexual harassment prevention training tailored to entertainment companies, and proven

expertise handling investigations of sexual harassment claims in connection with high-profile television series, it's no surprise that Ivy Kagan Bierman has been a prominent voice during a tumultuous year in Hollywood. In addition to counseling entertainment companies on issues related to sexual harassment and discrimination, Bierman serves as an advisor for prominent entertainment industry nonprofit organizations focused on these issues. She is a member of the Legal, Legislative and Policy Committee on Sexual Harassment and Gender Parity for TIME'S UP and also serves as an outside advisor for The Commission on Eliminating Sexual Harassment and Advancing Equality in the Workplace, chaired by Anita Hill. She is also on the advisory board for Callisto, a nonprofit technology company combatting sexual assault.

Her recent significant practice highlights have included ongoing representation of Jill Soloway and her company Topple Productions in connection with the investigation regarding alleged sexual misconduct by Jeffrey Tambor.

**ANDRÉE BLAIS***Partner*

Nossaman LLP



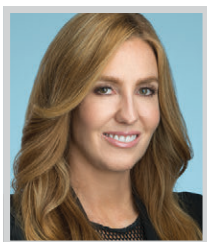
Andrée Blais is a partner in Nossaman's Infrastructure Practice Group in the Los Angeles office and focuses on delivering major public

infrastructure projects through public-private partnerships (P3s) and other alternative delivery methods. She helps public agency clients advance complex procurements in the transportation and social infrastructure sectors. She has significant experience in performance-based availability payment P3 projects.

Blais serves as a lead or key member of Nossaman teams assisting with high profile U.S. projects – including the current \$5 billion City of Los Angeles/Los Angeles World Airports (LAWA) Landside Access Modernization Program at LAX. This program will ease access into and out of LAX through development of an elevated 2.25-mile Automated People Mover train that will connect travelers to LA Metro's Crenshaw Light Rail Line, intermodal transportation facilities and a consolidated rental car center. Blais is a key advisor to LAWA on the APM project, which will be the first APM system to be procured through an availability payment P3 delivery model.

**MARIAH BRANDT***Partner*

Pillsbury Winthrop Shaw Pittman LLP



An experienced civil litigator and trial lawyer, Pillsbury partner Mariah Brandt resolves complex business disputes and class actions, securing

victories through trial, arbitration and negotiation. Brandt focuses on business litigation, including intellectual property, contract, policyholder insurance coverage and consumer privacy and fraud cases.

Brandt's clients span the entertainment, restaurant, banking, healthcare and technology industries. Experienced in federal, state and appellate courts, Brandt skillfully argues motions for dismissal of claims, temporary restraining orders, preliminary injunctions and discovery orders. She has served as lead counsel in several jury trials, managed all stages of large-scale litigations and has crafted winning appellate briefs. She recently represented Fluidmaster in prosecuting an insurance coverage case against seven of its insurers to obtain coverage for seven product liability class actions. She reached favorable settlements with six of those insurers, recovering over \$30 million for Fluidmaster. She also defended cloud services company j2 in two nationwide class actions involving torts and statutory claims arising out of j2's charging of late fees on its voice service products.

**CELESTE BRECHT***Partner, Litigation*

Venable LLP



Celeste Brecht is a partner at Venable LLP, where her practice focuses on complex civil litigation. She has been a member of multiple trial teams in both

state and federal court, and has obtained successful jury verdicts for her clients. Additionally, Brecht has won numerous dispositive motions in advance of trial and has managed cases from inception through post-verdict motions involving commercial business disputes, employment matters, as well as products and premises liability cases for clients ranging in size from regional business entities to Fortune 50 companies. Brecht has also obtained successful results for her clients in a variety of administrative forums.

Among Brecht's recent significant cases was her work successfully defeating class certification in a California consumer protection and unfair competition case. She also recently obtained a favorable verdict on behalf of leading media company in a defamation trial. She also won anti-SLAPP motion, affirmed on appeal, on behalf of a high-profile actor, producer, and comedian, which defeated allegations of harassment, discrimination, and defamation.

**JENNIFER WOO BURNS***Partner*

Scali Rasmussen LLP



Jennifer Woo Burns is a partner and co-chair of the Labor and Employment Law practice group at Scali Rasmussen's Labor and

Employment Law practice group is comprised of attorneys with diverse backgrounds and experiences that combine to form a cutting-edge team of thought leaders in the industry. Burns' practice focuses on counseling and advising employers on compliance with employment laws.

Her background in HR management and directing in-house legal compliance for public and private car dealership groups has been invaluable for her current practice of advising dealership clients. She views her counseling role as a collaboration with clients to balance their interests of compliant policies and practices with the realities of dealership operations. She achieves this through her experience and understanding of the unique aspects of the industry and her emphasis of real-world approaches and solutions for day-to-day compliance challenges. Burns is passionate about providing individuals in HR roles with practical solutions and proactive strategies that will benefit their business while minimizing risk and potential litigation.

Congratulations to our partner  
**Christianne Kerns**

~  
**Most Influential  
Women Attorneys  
in Los Angeles**  
~



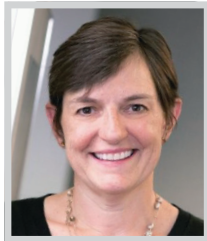
**HAHN & HAHN LLP**

A Certified Women & Minority Owned Business Enterprise  
Providing Corporate, Litigation, Real Estate,  
and Trust & Estate Counsel Since 1899

## MOST INFLUENTIAL WOMEN ATTORNEYS

**LINDA M. BURROW**

Partner  
Boies Schiller Flexner LLP



Linda Burrow is a trailblazing litigator who has established herself as a leader in the entertainment industry for her high-profile trial and appellate

victories on behalf of the world's leading entertainment companies including Warner Bros., Sony Pictures, Twentieth Century Fox Film Corp., Netflix, NBCUniversal and Paramount Pictures. Burrow's cases range from participations claims to copyright and trademark infringement, breach of contract, defamation, and right of publicity. In addition to her work in entertainment law, Burrow maintains an active pro bono practice having been recognized three times by the ACLU Foundation of Southern California for her advocacy on issues of free speech and civil rights.

In one recent matter that closed in June of last year, Burrow and her BSF colleagues represented multiple studios in asserting copyright and trademark claims against a website that used the studios' registered trademarks and copyrights to sell unauthorized tickets to movie premieres and television tapings. The case was resolved through a stipulated permanent injunction against the website.

**MARY CRAIG CALKINS**

Partner  
Kilpatrick Townsend & Stockton LLP



Nationally and internationally recognized, Mary Craig Calkins is a partner in Kilpatrick Townsend's Los Angeles office where she leads the

fast-growing West Coast Insurance Practice. Insurance is a critical part of virtually every significant piece of litigation, and Calkins has more than 30 years of high-profile insurance coverage experience representing policyholders in headline-grabbing directors and officers liability, entertainment and media, intellectual property, cybersecurity, employment practices, and other significant coverage dispute.

Under Calkins' leadership, Kilpatrick Townsend's West Coast team has helped its clients recover hundreds of millions of dollars through the negotiation, litigation, trial, and arbitration of complex insurance coverage disputes. Her team is handling coverage disputes and issues implicating the laws of Brazil, Chad, Chile, Germany, Jordan, Malta, Syria, Turkey and the UK internationally, as well as matters in California and multiple other states. Calkins handles major directors and officers liability coverage issues for diverse matters involving corporations' high-ticket matters pending in the California federal courts, U.S. Bankruptcy Court, and in multiple jurisdictions.

**ERIKA CANCHOLA**

Partner  
Ramo Law PC



Erika Canchola is an entertainment partner at Ramo Law PC, a minority owned, female led 10-attorney law firm headquartered in Beverly Hills.

Her firm provides comprehensive legal services to its clients in the entertainment industry with a specialized focusing representing financiers, producers and production entities in film, television and digital content. The firm provides experienced legal services to optimize its clients' financial, legal and business position in the financing, product and exploitation of their content.

For over 12 years, Canchola has represented independent and up-and-coming filmmakers and producers, enabling them to bring their stories to life. She regularly handles film financing, corporate formations, trademark and copyright filings, contract negotiation, production financing and production legal for her clients. Her recent work highlights currently include representing the producers of the films "Call Me By Your Name" and "The Disaster Artist;" both films were nominated for Academy Awards. She also represented five films nominated for Independent Spirit Awards.

**NICKI CARLSEN**

Partner & Co-Chair of the Environmental, Land Use & Natural Resources Team  
Alston & Bird LLP



Nicki Carlsen is the co-chair of Alston & Bird's Environment, Land Use & Natural Resources Group, a position she has held since 2008. In her time as co-chair,

she has been instrumental in the expansion and growth of her team in the California marketplace. She is also an active participant in the firm's Women's Initiative committee and champions the advancement of women within her practice group and the firm.

Carlsen focuses the breadth of her practice on land use, environmental compliance, and litigation. With more than 25 years of land use and environmental experience, she is well versed in federal, state, and local regulations affecting development projects, including land use planning and subdivision laws, the California Environmental Quality Act (CEQA), California Coastal Act, National Environmental Policy Act (NEPA), Clean Water Act, endangered species acts, and cultural resources requirements. Through her representation of industrial, residential, and commercial property owners, Carlsen can navigate a course of action from project inception to completion.

**MARGARET "MAGGIE" CARTER**

Partner  
O'Melveny & Myers LLP



Former federal prosecutor and currently a partner in O'Melveny's White Collar Defense and Corporate Investigations practice, Maggie

Carter is regularly called upon by Los Angeles' leading institutions and executives when facing regulatory issues, government enforcement, and novel, cutting-edge legal issues. Carter possesses a unique ability to navigate issues of public concern and negotiate solutions that satisfy public needs and allow for business continuity, innovation and growth. Using her combination of government and private practice experience, Maggie guides individual clients and corporations through sensitive internal investigations, government inquiries and requests, enforcement actions, and civil trials.

Carter led the O'Melveny team that in February resolved a high-profile licensing issue between the City of Santa Monica and the wildly popular electric scooter start-up Bird. The settlement allows the company to continue to operate and grow in partnership with the communities in which it operates. Carter continues to represent Bird on regulatory issues as the company grows.

**HAILYN J. CHEN**

Partner  
Munger, Tolles & Olson LLP



Hailyn Chen is a highly regarded litigation partner in the Los Angeles office of Munger, Tolles & Olson who focuses her practice on complex litigation

and internal and government investigations. She has earned the confidence and trust of some of California's most important institutions, including the University of California, Caltech and the Supreme Court of California, which recently appointed her to the Board of Trustees of the State Bar of California. She has earned a strong reputation among clients for her success in leading sensitive, high-stakes internal investigations covering a range of issues, including allegations of fraud and other financial misconduct.

Chen frequently represents higher education institutions in litigation matters and investigations. The University of California turns to her for advice on its most difficult issues. She recently advised the UC Board of Regents in a California State Auditor investigation into high profile allegations of misconduct. Her recommendations for comprehensive policy changes were recently approved by the Regents.

**CANDICE CHOH**

Partner  
Gibson, Dunn & Crutcher LLP



Candice Choh, a partner at Gibson, Dunn & Crutcher, has a broad based practice covering private equity and mergers and acquisitions, where she has led

numerous complex transactions involving collaboration of a team across jurisdictions/offices. Long-term clients continually look to Choh to guide them through their most complex investments and transactions. She is seen as a leader in the firm's corporate practice, in the firm's various committees and pro bono representations, as well as in her community.

She recently represented Stone Canyon Industries, LLC in the \$850 million equity recapitalization of its packaging subsidiary and also represented PCCP, a Los Angeles-based real estate investment manager, in connection with the sale of a minority stake to AMP Capital. Among her other recent successes was representing Leonard Green & Partners, L.P. in connection with the sale of a minority stake in the firm to Blackstone.

**ELIZABETH COUSINS**

Partner  
Nossaman LLP



Elizabeth Cousins joined Nossaman in early 2014 after a highly regarded legal career in Melbourne, Australia. Cousins has extensive

experience on complex and cutting-edge transactions in an array of infrastructure sectors including road, rail, health, justice, and water.

In the US, over the past several years, she has been a co-lead or key team member on a number of the most high profile and most innovative P3 transactions currently under development. These projects include the Michigan Street Lighting Project's progressive, \$125 million LED street lighting P3 project; the Arizona Street Lighting Project, which seeks to upgrade more than 19,000 luminaires from high-pressure sodium to LED technology; the approximately \$2 billion (capital cost) Maryland Transit Administration Purple Line Project; the \$600 million I-75 Modernization Project in Michigan; and the Riverside County Transportation Commission (RCTC) I-15 HOT Lanes project -- a \$425 million-\$450 million upgrade that will add tolled express lanes along a portion of the heavily travelled I-15 in Riverside County.

# LEWIS BRISBOIS CONGRATULATES JANA LUBERT

**Lewis Brisbois is proud to congratulate our partner Jana Lubert on her selection as one of the Los Angeles Business Journal's Most Influential Women Attorneys of 2018.**

**Jana is an inspired leader who serves as General Counsel for Lewis Brisbois and Chair of the firm-wide Directors & Officers national practice. She is also the first woman partner to have been formally named to the firm's Management Committee. Jana serves as the Administrative Partner of the Los Angeles office of Lewis Brisbois, the firm's largest office and the largest law office in Los Angeles, and Co-Chairs Lewis Brisbois' National Women's Initiative, which provides the firm's female attorneys with resources for mentorship and personal, professional, and business development.**

Initially built upon a strong partnership with the insurance industry, Lewis Brisbois is now a full-service national law firm with litigation and transactional practices including: antitrust and competition, bankruptcy and insolvency, commercial litigation, data privacy and cybersecurity, labor and employment, finance, intellectual property, real estate, and many more. True to our history, talent, and expertise, we continue relationships with countless domestic and international insurance carriers.

Lewis Brisbois has become the largest law firm in Los Angeles, the largest California-based firm, and the 13th largest domestic firm in the United States. Our diversity rankings are consistently among the highest in the country, and we are proud to retain our "small-firm" culture reflecting the values of hard work, humility, excellence, and decency.





## MOST INFLUENTIAL WOMEN ATTORNEYS

**LUCIA COYOCA**

Partner  
Mitchell Silberberg & Knupp LLP



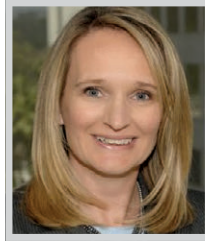
Lucia Coyoca is partner and co-chair of the Entertainment and IP Litigation practice group at Mitchell Silberberg & Knupp LLP. Coyoca

has a wealth of entertainment litigation experience, including disputes involving vertical integration claims as to the pricing of syndicated television programming, profit participant “back-end” contingent compensation claims arising out of studio-rendered accountings, the credit to be accorded an actor, writer, producer or director on a television or motion picture project, copyright, trademark and idea submission, and other intellectual property claims. In addition, Coyoca represents employers in a wide range of employment disputes, including wrongful termination, harassment, discrimination, retaliation, trade secret/unfair competition cases and other administrative matters.

For example, Coyoca was victorious as lead defense counsel in an appellate case representing the Walt Disney Co. in which the plaintiffs, writer/producer participants, claim a right to participate in the net profits earned from the exploitation of the highly successful “Hannah Montana” shows. Last month, an appellate panel refused to overturn an arbitration award in favor of Coyoca’s client.

**ROBYN C. CROWTHER**

Partner  
Boies Schiller Flexner LLP



Robyn Crowther is no stranger to taking complex commercial disputes to trial. She has experience in trade secret matters and copyright enforcement and

her matters have involved civil trials and arbitration before various tribunals including JAMS, AAA, FINRA and various state and federal courts. Her client roster includes individuals, multinational corporations, municipalities, and small businesses, for which she regularly obtaining extraordinary results. She has substantial experience in provisional and preliminary remedies, pleading attacks, and motions for summary adjudication and summary judgment.

Crowther takes on a wide-variety of matters. Over the past 18 months, she took on several IP and copyrights matters, a class-action lawsuit alleging discrimination, and a FINRA arbitration. For example, Crowther served as lead counsel in various matters for EVOX, for which she pursues enforcement actions to protect EVOX’s copyrights and other intellectual property. In January 2017, Crowther secured an order of partial summary judgment against KAYAK Software Corporation establishing the validity of EVOX’s copyrights, and also defeated KAYAK’s motion for summary judgment.

**MARISSA DENNIS**

Partner  
Allen Matkins



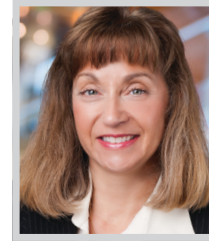
Marissa M. Dennis is a litigation partner in the Los Angeles office of Allen Matkins. Her litigation practice is focused on commercial,

real estate and financial services litigation and she currently leads the firm’s FinTech Litigation Initiative. Dennis commonly represents commercial landlords, tenants and developers in a variety of breach of contract and tort actions, as well as national lenders and servicers in complex consumer finance litigation. She also has extensive experience representing technology companies in unfair competition and false advertising claims, including in multiple class actions. She also has experience representing court-appointed permanent receivers in connection with securities fraud actions. Marissa has chaired numerous jury trials, bench trials, and arbitrations, and has argued before the California Court of Appeal and federal and state courts throughout California.

Dennis has recently chaired three arbitrations involving real property disputes, and obtained dismissals of two separate class action cases at the pleading stage. She received the 2016 Southern California Most Powerful and Influential Women Award from the National Diversity Council.

**BONNIE ESKENAZI**

Partner  
Greenberg Glusker LLP



Bonnie Eskenazi regularly impacts the legal landscape handling groundbreaking matters and some of Hollywood’s most high profile

and landmark entertainment disputes. In litigation, she represents plaintiffs and defendants in a variety of litigation matters, primarily focusing on entertainment disputes over issues such as royalties and profit participations, copyright ownership, idea theft, contracts, defamation, invasion of privacy, merchandise and licensing, music distribution, and new technology. She teaches entertainment law students at Stanford Law School and is a guest lecturer at Harvard Law School’s Entertainment Law class. Eskenazi is a leading entertainment attorney and a voice within the industry speaking out on gender discrimination in Hollywood, where has been quoted on the issue in many prominent journals.

In 2017, Eskenazi handled a first impression case which is at the intersection of copyright and labor law; defended the name, likeness and image rights of a legendary reggae artist; and helped establish one of Hollywood’s first sexual harassment helplines.

**THEANE EVANGELIS**

Co-Chair, Class Actions Practice Group  
Gibson, Dunn & Crutcher LLP



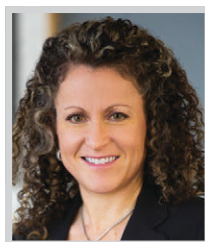
Theane Evangelis has played a lead role in a wide range of high-profile appellate, constitutional, class action, media and entertainment, and crisis management

matters. She is Co-Chair of the Class Actions Practice Group and Vice Chair of Gibson Dunn’s California Appellate Practice Group and is a prominent member of the firm’s premier appellate practice. She joined Gibson Dunn after serving as a law clerk to Justice Sandra Day O’Connor during October Term 2004

Among her recent work highlights is securing complete victory for Grubhub in a first-of-its kind gig economy trial. On February 8, 2018, U.S. District Judge Jacqueline Scott Corley entered judgment in favor of Grubhub, after a landmark 6-day trial in which a Grubhub delivery partner challenged his classification as an independent contractor and sought tens of millions of dollars of civil penalties on behalf of the State of California. Evangelis served as the architect of the team’s winning litigation strategy, and the victory is already being described as a “Gig Economy Milestone.”

**DEBRA FISCHER**

Partner  
Morgan, Lewis & Bockius LLP



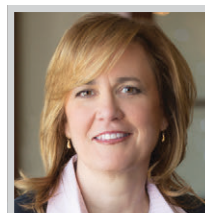
A prime example of someone who uses the full extent of the law for the benefit of others is Morgan, Lewis & Bockius LLP partner Debra Fischer. Fischer

has practiced employment law and unfair competition/trade secret litigation for almost 30 years, successfully trying cases in both California state and federal courts as well as in arbitration for clients across the country. She also dedicates an enormous amount of time to helping the underserved as President of the Board of Directors of the Legal Aid Foundation of Los Angeles (LAFLA). Last year alone, LAFLA assisted 30,000 clients through its five offices and an additional 50,000 clients through self-help centers located around the city.

By day, Fischer represents clients on the full range of employment disputes including representing high-profile individuals as well as advising on and litigating trade secret and unfair competition issues. Her appellate work includes successfully briefing and arguing cases in state and federal courts of appeal, including briefing in the US Supreme Court.

**BARBARA FITZGERALD**

Managing Partner – Los Angeles Office; Firm  
Employment Counsel  
Morgan, Lewis & Bockius LLP



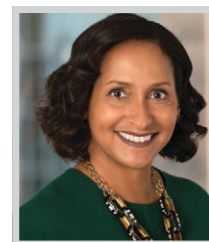
As managing partner of Morgan, Lewis & Bockius LLP’s Los Angeles office, Barbara Fitzgerald is often sought out by major companies in the

entertainment, health services, financial services, manufacturing, retail, hospitality, and transportation industries for her counsel in employment law.

Companies seek out Fitzgerald, both for her experience in winning high-profile employment litigation and for her no-ego, “I’m here to help” attitude. She also considers it a great responsibility as office managing partner to make sure that Morgan Lewis is actively making a positive difference in the Los Angeles community and beyond. Under her leadership, every lawyer in the firm’s LA office rose to the firm’s pro bono challenge, donating a minimum of 20 hours of pro bono work in a 12-month period. She helped support the Heart of Los Angeles, which provides underserved youth with exceptional programs in academics, arts, and athletics, and helped secure a favorable settlement on behalf of 12 elderly Holocaust survivors who were facing imminent eviction from their Los Angeles-area housing and potential homelessness.

**LISA GILFORD**

Partner  
Skadden, Arps, Slate, Meagher & Flom LLP



Lisa Gilford is consistently recognized as one of the leading complex civil litigators in California. Her practice is focused on

class actions, products liability law and jury trials. She represents several major members of the automotive, pharmaceutical, communications, oil and gas, aerospace and chemical manufacturing industries and has earned a reputation as a “go-to” lawyer for companies facing their most challenging and significant issues. As well, superb advocacy skills have played a pivotal role in shaping the outcome of numerous class actions nationwide.

Gilford has been engaged by an impressive roster of clients who have positioned her at the forefront of weighty litigation. If early, cost-effective resolutions cannot be achieved, she is highly experienced at defending class action lawsuits through the class certification process and trial. Gilford also is active in Skadden’s Black Affinity Network, which was established with the primary purpose of promoting the recruitment, retention and elevation of black attorneys.



Thompson Coburn congratulates  
partners Helen B. Kim and  
Jennifer A. Post for their  
recognition among the  
Most Influential  
Women Attorneys  
in Los Angeles

At Thompson Coburn, we value innovation, creativity and boldness. We celebrate the strengths and abilities of our women attorneys and staff and are dedicated to helping our professionals thrive.



With more than 380 attorneys across 5 offices and 40 practice areas, we are proud to be one of only 44 law firms nationwide who achieved a 2017 "Gold Standard Certification" from the Women in Law Empowerment Forum.

Visit [thompsoncoburn.com/women](http://thompsoncoburn.com/women) to learn about our Total Commitment to Women's Initiative.

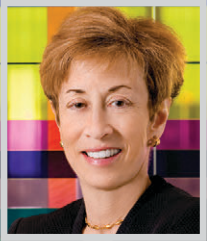
 **THOMPSON  
COBURN** LLP

[thompsoncoburn.com](http://thompsoncoburn.com)

## MOST INFLUENTIAL WOMEN ATTORNEYS

**PATRICIA L. GLASER**

Partner and Chair of the Litigation Department  
Glaser Weil Fink Howard Avchen & Shapiro LLP



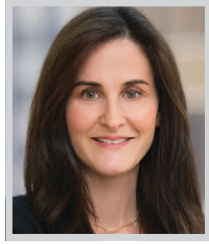
Patricia Glaser is the head of Glaser Weil's Litigation Department and tops the short list of trial attorneys in the nation sought after for high-

stakes litigation. Respected as a business trial lawyer, she also provides general legal counsel to publicly and privately held companies across a range of industries, including intellectual property, real estate, entertainment, banking and securities. Her clients include Fortune 500 companies, major studios, real estate investors and developers, financial institutions and high-profile entertainers and public figures.

She has long served as one of the entertainment industry's preeminent trial lawyers – arguably the foremost attorney for studios, production companies, creative executives and A-list celebrities that need to solve their issues through negotiation or litigation. Chambers and Partners has described her as “one of the most prominent litigators in the country” and “ferociously protective of her clients.” It is that passion and protectiveness that sets Glaser above and beyond her entertainment litigation peers.

**KATE S. GOLD**

Partner  
Drinker Biddle & Reath



Kate Gold is a 27-year veteran of labor and employment law and other high stakes commercial litigation, with a diverse client base of large retail

stores and household brand names in the entertainment industry and professional services industries. She has also become a leading voice on deceptive pricing litigation against retailers, as well as website accessibility class actions concerning the Americans with Disabilities Act.

Gold's practice includes the defense of individual, collective and class actions. She has handled dozens of wrongful termination, retaliation, whistle blower, sexual harassment, race, age, family leave, pregnancy and disability discrimination cases. She frequently counsels and defends her employer clients in actions involving misappropriation of intellectual property and trade secrets, interference with contracts and unfair competition. Her class action practice includes defense of claims for wage and hour violations, classification of employees, deceptive pricing and compliance with California law. She regularly assists clients in the context of purchase and sale of businesses; noncompetition agreements and the negotiation and drafting of executive employment and separation agreements.

**CHRISTINA N. GOODRICH**

Partner  
K&L Gates LLP



Christina Goodrich is a litigator in K&L Gates' Los Angeles office. In part because of her experience with a wide variety of cases during her

district court and Ninth Circuit clerkships after law school, Goodrich's practice spans several areas, including litigation involving patents, trade secrets, trademarks, complex commercial disputes, anti-trust, securities, and labor and employment. She also handles appeals in these same areas. She has represented Fortune 100 companies, as well as individuals, in the entertainment, biotechnology, social media, real estate, sports products and apparel, movie and production, diagnostic testing, beverage, manufacturing, oil and gas, electronics, designer clothing, staffing, hospitality, and financial services industries.

Goodrich has had several recent noteworthy successes. Among them are a sweeping win for Compass Group USA dba Canteen Vending Services and Best Vendors Management, Inc, in which the court granted summary judgment on all claims, which included a California antitrust claim.

**MARISSA ROMÁN GRIFFITH**

Partner/Entertainment Group  
Akin Gump Strauss Hauer & Feld LLP



One of the few female partners – and among the very few senior Latina attorneys in private practice – specializing in entertainment transactional

matters, Marissa Román Griffith is a recognized leader in her field. She regularly handles multimillion-dollar representations for financiers, borrowers, distributors and others involved in various aspects of the production, financing and distribution of film, television and digital content, including credit facilities (on behalf of the lead agent/lender as well as the borrower), domestic and international co-financing agreements and slate transactions.

In addition to maintaining her successful practice, Griffith co-chairs Akin Gump's Los Angeles office diversity committee and sits on the firmwide diversity committee. She is also heavily involved in the firm's women executives in entertainment network initiative launched last year, with the goal of promoting women in business, both externally and internally, through periodic social and educational events designed to broaden collective relationships and strengthen connections within the industry.

## CONGRATULATIONS

## TO OUR PARTNER KATE GOLD

for being named one of *L.A. Business Journal's* 2018  
Most Influential Women Attorneys.

Drinker Biddle is proud of the many accomplishments of our talented women lawyers. Our Women's Leadership Committee is deeply committed to attracting, retaining and advancing women in the firm.

Drinker Biddle®

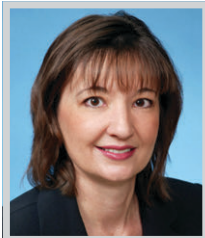
www.drinkerbiddle.com

CALIFORNIA | DELAWARE | ILLINOIS | NEW JERSEY  
NEW YORK | PENNSYLVANIA | TEXAS | WASHINGTON DC | LONDON  
Drinker Biddle & Reath LLP. A Delaware limited liability partnership. Jonathan I. Epstein and Andrew B. Joseph, Partners in Charge of the Princeton and Florham Park, N.J., offices, respectively.

MOST INFLUENTIAL WOMEN ATTORNEYS

**JANET GRUMER**

Partner  
Davis Wright Tremaine LLP



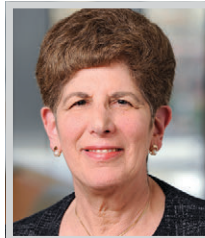
Janet Grumer has cultivated an impressive business and legal career that has allowed her to provide practical, real-world advice and counsel to

her clients. She is able to draw on her extensive business management experiences to address the concerns of clients, including Harvard and MIT, multiple-location retail, restaurants, movie theatres, and other clients.

Grumer's unique perspective and ability to blend the legal and practical to create workable solutions for clients is what distinguishes her from others. Her practice focuses on employment law and public accommodations law under the Americans with Disabilities Act. With a practice made up of half advice and half litigation, she is able to help her clients avoid litigation, and when that is not possible, she zealously defends them. Her advice and counsel practice is aimed sexual harassment prevention, investigations, terminations of employment, reductions in force, employee disciplinary actions, and creating personnel policies. Grumer speaks frequently on preventing sexual harassment.

**TIMI A. HALLEM**

Chair, Hospitality Law Practice Group  
Manatt, Phelps & Phillips, LLP



A trusted advisor in the areas of real estate and hospitality law, Timi Hallem has had great success over the course of her career representing major

developers, lenders, owners and operators in all economic climates. She is a swift and successful problem solver whose work on acquisitions, intricate loan restructuring and large-scale development over the past 18 months continues to make her the go-to counsel for clients whose legal needs change with the markets.

As head of Manatt, Phelps & Phillips' national hospitality law practice and a partner in the firm's real estate practice, Hallem is experienced in covering all aspects of real property and hotel ownership and development, including acquisition, entitlement, development, financing, leasing and disposition. She has a depth of knowledge in all types of real estate projects, including hospitality, commercial, industrial, residential, public/private development and mixed-use projects. Hallem has been repeatedly recognized by Real Estate Southern California as "One of SoCal's Most Influential Women in Real Estate."

**STACY HORTH-NEUBERT**

Counsel  
Skadden, Arps, Slate, Meagher & Flom LLP



Stacy Horth-Neubert is a nationwide leader in managing large, complex, multidistrict litigations in high-stakes matters for her clients, and

has a broad-ranging complex commercial litigation practice. Her areas of practice include state and local regulation, unfair business practices and false advertising, and commercial contract disputes. She has represented numerous internet-based clients, as well as clients in the travel and leisure, design, fashion, entertainment, engineering and other industries.

Horth-Neubert balances her client work with an exceptionally deep commitment to public service, having served for more than a decade as coordinator of the Skadden Los Angeles office's award-winning pro bono program, in addition to currently serving as Immediate Past Present of the Women Lawyers Association of Los Angeles, as co-Chair of the Women in Law Empowerment Forum Southern California, and on the Executive Board and as Chair of the Philanthropy Committee of the Board of Trustees of the ACLU of Southern California Foundation, among other endeavors.

**MARSHA A. HOUSTON**

Partner  
Reed Smith LLP



Marsha A. Houston is a partner at Reed Smith and is based out of the Los Angeles office. She is a member of the firm's

Financial Industry Group, practicing in the area of commercial restructuring and bankruptcy. She focuses her national practice on the representation of financial institutions, secured and unsecured lenders, creditors' committees, entertainment clients, trustees and investors primarily in Chapter 11 reorganization matters, assignments for the benefit of creditors, a broad range of bankruptcy and creditors' rights matters, and the protection of intellectual property rights.

Houston also negotiates and documents loan restructuring transactions, debtor-in-possession financing, asset acquisition agreements, out-of-court restructurings, and workouts. Marsha's practice has included such industries as: entertainment, retail, manufacturing, real estate, airlines, mining, oil & gas, hospitality, time-share, leisure and resort properties, and health care. Houston has represented clients in cases throughout the country and is known for her extensive knowledge in entertainment insolvency related issues. She is regularly asked to speak on intellectual property and bankruptcy issues.



Congratulations to  
Kelli Sager and Janet Grumer  
for being named "Most  
Influential Women Attorneys."



DWT Top-Ranked by  
the Financial Times Innovative  
Lawyers Awards North America

Anchorage | Bellevue | Los Angeles | New York | Portland  
San Francisco | Seattle | Shanghai | Washington, D.C. | [DWT.COM](http://DWT.COM)



**Davis Wright  
Tremaine LLP**  
DEFINING SUCCESS TOGETHER

## MOST INFLUENTIAL WOMEN ATTORNEYS

**CHRISTIANNE KERNS**

Partner  
Hahn & Hahn LLP



**C**hristianne Kerns is a partner at Hahn & Hahn LLP. She has extensive expertise in a wide variety of real estate and commercial transactions and

general business matters, with emphasis in commercial and real estate finance and finance workouts. In her law practice, Kerns represents a number of large, public and private organizations – often times serving as their outside legal counsel. The Pasadena Tournament of Roses Association and the Huntington Memorial Hospital are two examples of organizations for which Kerns has provided outside legal counsel on a regular basis and in a number of capacities.

In addition to her legal practice, Kerns also spends hundreds of hours each year volunteering in the community, providing legal insight and guidance for a number of charities and non-profit organizations. One example of her work for such organizations has been Villa Esperanza Services, a non-profit organization that provides services to 600 children, adults, seniors and their families annually, with a full range of programs for individuals with developmental disabilities.

**HELEN B. KIM**

Partner  
Thompson Coburn LLP



**H**elen Kim has had incredible success in her decades-long career. She was highlighted in the Los Angeles Business Journal last year as one of its Most Influential

Women in Securities Law. Concurrent to this, she was also recognized this year as one of the Most Influential Minority Attorneys in Los Angeles.

Late last year, Kim, as lead counsel and with partner Jeff Brown, obtained dismissal of 12 claims of breach of fiduciary duty and negligence brought by Avalon Land Company, LLC, and its managing member against TC client Dae Yong (David) Lee after a two-week bench trial. After the trial, including testimony from four fact witnesses, Lee moved for entry of judgment and dismissal of all claims as time-barred. In a 17-page Statement of Decision that largely tracked TC's post-trial briefs, the court on November 3 dismissed all 12 claims against David Lee as time-barred under the two-year statute of limitations for negligence and the three-year statute of limitations for breach of fiduciary duty arising from fraud.

**LINDA KORNFELD**

Partner, Vice-Chair Insurance Recovery Practice  
Blank Rome LLP



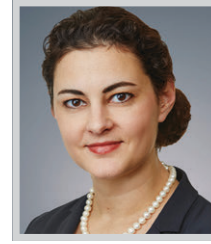
**L**inda Kornfeld is one of the nation's top insurance recovery lawyers. She is a partner in the Los Angeles office of Blank Rome LLP, and a vice-chair

of the firm's national Insurance Recovery practice. She joined Blank Rome in October 2017, along with a team of insurance lawyers, from Kasowitz Benson Torres LLP, where she was co-head of the insurance recovery group and Managing Partner of its Los Angeles office.

Clients turn to Kornfeld for her strategic counsel, calm demeanor, creative approaches, and responsive service. She has played a key role in the nation's most prominent, high-stakes insurance coverage litigation for more than 25 years, assisting her clients in the recovery of hundreds of millions of dollars in insurance assets in complex matters at trial and through settlements. Her clients range from telecommunications companies, universities, and real estate developers, to manufacturers and non-profit organizations. She also advises senior executives and in-house counsel on ways to mitigate risk and maximize their insurance recoveries.

**TARIFA LADDON**

Partner  
Faegre Baker Daniels LLP



**A**fter acting as local counsel to Faegre Baker Daniels in Los Angeles for many years, Tarifa Laddon took the gutsy step of leaving Norton Rose Fulbright as a

first-year partner to join FaegreBD in order to open the firm's brand new Los Angeles office, which has since flourished. A partner in the products liability and environmental group, she specializes in protecting innovative manufactures of products, ranging from medical devices, pharmaceuticals, food products and other consumer products, and has a particular interest in drug and device litigation. A diverse litigator, she also represents clients in a whole host of other matters, including complex commercial litigation, environmental, agribusiness, toxic tort, esports, Proposition 65, real estate, business torts and labor and employment matters. She is also qualified as a solicitor in England and Wales.

Laddon has represented one of the world's largest orthopedic medical device manufacturers for many years and is now lead counsel for all of the company's California products liability litigation.

## HUNTON ANDREWS KURTH



**Congratulations to Hunton Andrews Kurth partners Ann Marie Mortimer and Michele Beilke for being named among the 2018 Most Influential Women Attorneys by the *Los Angeles Business Journal*.**

We are proud of your recognition by the *LABJ* for your professional achievements, dedication to your clients and outstanding leadership.

MOST INFLUENTIAL WOMEN ATTORNEYS

**ANN LAWRENCE**

Partner, Global Co-Chair, Retail Sector  
DLA Piper LLP



**A**nn Lawrence advises on strategic transactions, including financings, recapitalizations, restructurings, acquisitions and

dispositions. She is the Global Co-Chair of the Retail Industry Sector and focuses her practice on a wide variety of retail brands including e-commerce, affiliate marketing, digital media, fashion, jewelry and branded consumer products. Her representative deals include the Initial Public Offering of YogaWorks, Inc. She was also the lead attorney representing the Shammass Group in the sale of Downtown Los Angeles Auto Group to Lithia Motors, Inc.

Within the firm, Lawrence is a mentor to many junior attorneys and actively participates with the LAW program – the Leadership Alliance for Women – an initiative to help retain and develop women lawyers in the firm’s global environment. LAW fosters internal networking, facilitates the flow of information and empowers women lawyers by developing leadership skills and creating business development opportunities. LAW advances the firm’s global competitive edge by developing and promoting women attorneys to maximize their opportunities for business generation and leadership.

**IRENE Y. LEE**

Partner  
Russ August & Kabat LLP



**I**rene Y. Lee is a partner at Russ August & Kabat, where she focuses her practice on all aspects of intellectual property, including patent, trademark,

trade secret, copyright, and IP licensing. She has extensive experience in trademark prosecution, litigation, and licensing with an emphasis on global brand expansion and management through strategic trademark and copyright protection and enforcement programs.

In addition, as a registered patent attorney, Lee employs her patent prosecution experience in strategizing patent litigation and licensing issues. She represents clients in a wide range of industries, including integrated circuits, biotechnology, medical devices, computer software, video game systems, housewares, baby products, food and beverages, apparel, and jewelry. Clients from varying industries seek and heed Lee’s advice and her peers respect her opinion because of her considered and precise legal analysis balanced against her practical and pragmatic approach to legal problems with real life solutions.

**JANET I. LEVINE**

Partner  
Crowell Moring LLP



**J**anet Levine is one of the nation’s top white-collar lawyers and has been a leader in the field for years. As one of few and first prominent

women in the white-collar bar, Levine has an extraordinary record of winning first-of-a-kind trials and handling groundbreaking and high-profile matters. These accomplishments – which include a recognized commitment to pro bono work – distinguish her as one of the most influential women lawyers in Los Angeles.

Levine is a White Collar & Regulatory Group partner and is chair of Crowell & Moring’s Trial Practice. She has first-chaired headline grabbing cases - from public corruption to espionage to Foreign Corrupt Practices Act (FCPA) matters - and did so when the path forward was virtually unscripted. Her results speak for themselves: high-stakes, high-visibility matters handled deftly and discreetly or when necessary, resolved or tried favorably. Levine’s work for clients has resulted in saved reputations, businesses, fortunes, and careers.

**CRYSTAL LOFING**

Partner  
Allen Matkins



**C**ystal Lofing is a partner in Allen Matkins’ Century City office’s real estate group whose practice involves multiple facets of real

estate transactions, specifically including acquisitions and dispositions (including note purchases and subsequent foreclosure or deed-in-lieu of foreclosure processes and negotiations), commercial leasing, real estate joint venture agreements, ground lease and development transactions and other documents relating to the ongoing operation and management of commercial property. She represents landlords, tenants, sellers, buyers, developers and other real estate users, ranging from entrepreneurial individuals and entities to real estate investment trusts and other highly sophisticated institutional investors.

She is frequently involved in some of California’s most high-profile real estate matters. Since 2010 she has closed more than \$10 billion in commercial acquisitions and dispositions. Notable transactions include her representation of Strada Investment Group in the acquisition of a 5-building campus on 140 acres in Roseville for \$105.1 million.



Venable Celebrates

**Celeste Brecht and Michele Mulrooney**

2018 Most Influential Women Attorneys

We are delighted to recognize the great work of our colleagues, and thank them for their service to our clients, and the Los Angeles community.

**VENABLE** LLP

CALIFORNIA | DELAWARE | MARYLAND | NEW YORK | VIRGINIA | WASHINGTON, DC

2049 Century Park East, Suite 2300, Los Angeles, CA | Attorney advertising.

**MOST INFLUENTIAL WOMEN ATTORNEYS**

**DANA LOWY**

*Partner*  
Meyer, Olson, Lowy & Meyers, LLP



**D**ana Lowy is a founding partner at the female-owned, family law firm Meyer, Olson, Lowy & Meyers, LLP (MOLM). Over her 22 years with

MOLM, she has helped establish it as one of the nation's most respected firms working in the areas of complex high-asset and high-conflict family law matters.

Lowy has extensive experience and expertise in all aspects of family law including marital property characterization, valuation and division, tax issues in divorce, non-marital relationships, contested custody, mediation, and litigation. She is also an accomplished specialist and sought after in preparing and negotiating cohabitation agreements and pre- and post-nuptial agreements for many high-net-worth individuals, children of dynastic families, athletes, individuals in the entertainment field and prominent business people. Lowy has earned a reputation as a smart, savvy, creative and compassionate advocate for her clients. A testament to her success as both a negotiator and litigator are the many referrals she receives from clients as well as opposing attorneys and parties.

**JANA LUBERT**

*General Counsel*  
Lewis Brisbois Bisgaard & Smith LLP



**J**ana Lubert is the general counsel to Lewis Brisbois and is involved daily in the leadership of the firm. Providing legal advice to more than 1,200 lawyers

nationwide, Lubert is a problem solver and a resource available for firm attorneys to talk through ethical and practical problems that arise in the everyday practice of law.

Although previously an ex-officio of the firm's management committee, in 2017 she became the first woman voting partner named to Lewis Brisbois' 11-person national Management Committee. The committee is responsible for all management decisions at the firm, including policies, business practices, and the future direction of the firm. Lubert also serves as the administrative partner of the Los Angeles office of Lewis Brisbois, the firm's largest office with nearly 300 attorneys and the largest law office in Los Angeles. Lubert also spearheaded the formation of the Women's Initiatives Committee, which she currently co-chairs. The committee provides a resource for the firm's female attorneys to tap into for development and marketing activities.

**THERESA MARCHLEWSKI**

*Principal*  
Jackson Lewis P.C.



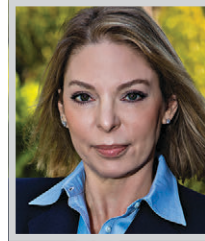
**T**heresa M. Marchlewski is an equity principal at Jackson Lewis P.C. She has nearly 40 years of experience in all phases of employment and

commercial litigation both jury and non-jury in the state and federal courts, handling age, disability, gender, national origin and race discrimination, sexual harassment and wrongful termination claims. In her career, Marchlewski has developed significant expertise in Sarbanes Oxley, ERISA and trade secret litigation, and matters involving bank operations, mortgage banking, broker dealer and commercial litigation, unfair competition and real estate. Marchlewski has significant expertise and experience in the electronic discovery process, having developed and implemented e-discovery guidelines and protocols to ensure businesses understand and comply with electronic discovery obligations. She currently serves as the co-chair of the firm's Financial Services Practice Group.

Marchlewski has handled numerous wrongful termination, harassment and employment discrimination claims in financial services, broker dealer and insurance brokerage contexts. She has had significant exposure in class action and California Business & Professions Code Section 17200 claims.

**NINA MARINO**

*Partner, Kaplan Marino*  
Kaplan Marino



**N**ina Marino comes from a family of civil lawyers, including her mother, father, three siblings, cousins and uncles on both sides of the family. She

attended law school at night, working at a criminal defense law firm during day. Upon passing the bar and being sworn in, she was in court representing a client the next day. Within two years of becoming a lawyer, Marino started her own criminal defense law firm. Within seven years, she opened Kaplan Marino, a white-collar criminal defense law firm. Over the course of the past 27 years, her practice has transitioned from a traditional criminal defense practice to a highly sophisticated white-collar crime practice.

Marino is also a trailblazer in bringing women to the forefront as well as important social issues to the public eye and mind. As Director of Continuing Legal Education for ABA Criminal Justice Section, she has changed the composition of educational programming to ensure that women speakers are fairly represented.

**BIRD | MARELLA P.C.**

BIRD • MARELLA • BOXER • WOLPERT • NESSIM • DROOKS • LINCENBERG • RHOW

**CONGRATULATIONS**

*to our Principals and colleagues*

**SHARON BEN-SHAHAR MAYER (2017)**

*and*

**NICOLE RODRIGUEZ VAN DYK (2018)**

*on being named*

**LOS ANGELES BUSINESS JOURNAL  
MOST INFLUENTIAL WOMEN ATTORNEYS**



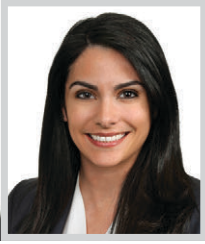
Bird Marella litigates complex and white collar criminal matters in state and federal courts across the United States. For more than 35 years, we have built our reputation on the quality of our lawyers and the outstanding results we achieve for our clients.

1875 Century Park East, 23rd Floor | Los Angeles, California 90067 | 310.201.2100 | [www.birdmarella.com](http://www.birdmarella.com)

MOST INFLUENTIAL WOMEN ATTORNEYS

**DAMARIS MEDINA**

Shareholder  
Buchalter



Damaris Medina is a shareholder in Buchalter's Los Angeles office, and is co-chair of the firm's Health Care & Life Sciences Industry Group. She also

serves on the firm's Recruiting and Women@Buchalter Committees. Medina is a health care and commercial litigator with extensive experience representing health care clients in complex litigation, contracting, risk management, and OIG investigations.

Medina's clients range widely from urgent care centers, emergency physician groups, and billing companies to gastroenterologists, hospitals, pathologists, neurologists, hematologists, pharmacies, plastic surgeons, dentists, health care consulting companies, emergency transportation providers, and Part D health plan providers. She also successfully handles business and commercial litigation matters that involve class action issues, securities, business structuring, commercial real estate, shareholder disputes, breach of contract, FINRA arbitration, employment issues, and international sales and contracting. Medina earned her J.D., cum laude, at Suffolk University Law School where she earned a Certificate in International Law, with Distinction.

**ANN MARIE MORTIMER**

Managing Partner of the Los Angeles office  
Hunton Andrews Kurth LLP



Hunton Andrews Kurth's Ann Marie Mortimer ranks among the premier attorneys in California for her work in complex, high-stakes litigation. One of

only a handful of female managing partners in the state, Mortimer has established a track record as an elite litigator and positioned herself as a charismatic leader within her firm. She is on the firm's executive committee, spearheads the firm's prestigious energy and environmental litigation practice, is managing partner for the firm's growing Los Angeles office, and has a 20-year record of courtroom victories.

Whether it's opening her own premier litigation boutique or founding the first west coast office of a leading national law firm in Los Angeles, Mortimer has made her mark. Since joining Hunton Andrews Kurth in 2006, she has become one of the state's premier attorneys, a powerful position that she has leveraged to fight for not only her clients, but also the rights of women and the underrepresented in the Los Angeles community and throughout California.

**MICHELE M. MULROONEY**

Chair, West Coast Tax and  
Wealth Planning Practice  
Venable LLP



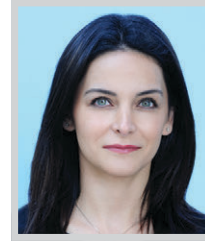
Michele Mulrooney is recognized as one of the top tax and wealth planning lawyers in the entertainment industry. She provides estate

planning and family law counsel to some of the most recognized names in the industry, and her work includes sophisticated multi-million-dollar estate and dynasty matters.

Mulrooney's astute insights into the distinctive legal needs of individuals in the entertainment industry have allowed her to develop a broader service offering than most estate planning attorneys. She is uniquely experienced to handle a wide range of matters, from a prenuptial agreement to the sale of a majority stake in a professional sports franchise, and international tax and estate issues. Her reputation as a trusted confidant and exceptional lawyer is based on her ability to balance the legal and personal complexities that exist at the intersection of family and corporate law for high-profile individuals. Her ability to effectively navigate the particulars of family and estate issues is a testament to her reputation as a go-to lawyer for individuals in the entertainment industry.

**ARAMEH ZARGHAM O'BOYLE**

Member  
Mintz, Levin, Cohn, Ferris, Glovsky and Popeo, P.C.



Arameh Zargham O'Boyle, of Mintz Levin, is the first female partner in the growing Los Angeles office. In her 12 years of practice, O'Boyle

has become one of the most sought after attorneys that product innovators and manufacturers in the pharmaceutical, medical device, personal care and cosmetic sectors rely on when faced with potential or actual litigation.

O'Boyle is a litigator who defends companies engaged in complex product liability litigation ranging from multi-party cases to single-plaintiff law suits. She has been an integral part of trial teams and served as lead strategist in high-profile litigation throughout the country involving pharmaceutical and medical device companies. She has built a career counseling clients on product labeling and risk assessment and prevention, as well as document retention, management and collection strategies. Clients rely on O'Boyle to quickly assess the issues and generate aggressive but cost-efficient defense strategies serving to minimize or entirely avoid litigation exposures, whether local or national in scope.



Tana Ryan

Kirkland & Ellis congratulates partners Tana Ryan and Tammy Tsoumas on being named to the *Los Angeles Business Journal's* 2018 list of

**“Most Influential Women Attorneys”**

Tier 1: California Corporate/M&A and Private Equity  
*Chambers USA*, 2017



Tammy Tsoumas

Tier 1 Litigation: Antitrust, Appellate, Bankruptcy, Commercial, First Amendment, Regulatory Enforcement, Securities and White Collar  
*U.S. News and World Report, Best Lawyers®*, 2012–2018

A-List Law Firm  
*The American Lawyer*, 2013–2017

**KIRKLAND & ELLIS**

Kirkland & Ellis LLP | 333 South Hope Street, Los Angeles, CA 90071 | +1 213 680 8400 | Attorney Advertising



## MOST INFLUENTIAL WOMEN ATTORNEYS

**JJI PARK**

Partner  
Pillsbury Winthrop Shaw Pittman LLP



Jji Park is the co-leader of Pillsbury's FinTech, Payments & Blockchain focus team and Unclaimed Property team. She represents

some of the world's largest companies with their needs involving digital and virtual currencies, prepaid cards, closed- and open-loop programs, e-wallets, mobile payments, and loyalty and promotional programs. She also handles mergers and acquisitions, private equity investments, and distribution and licensing agreements. Her clients include financial institutions, money services businesses, retail corporations, payment processors, online marketplaces, and Internet escrow companies.

Recently, she served as regulatory counsel to global fintech leader in its approximately \$3.5 billion acquisition, advising in particular with respect to multistate financial services and gaming licensing change of control requirements. She also advocated and delivered testimony on behalf of a leading fintech company before the Michigan Senate Banking and Financial Institutions Committee Hearing in support of legislation that, if enacted, would exclude the issuance, sale, or distribution of certain closed-loop prepaid access cards from the license requirement under the Michigan Money Transmission Services Act.

**STACY D. PHILLIPS**

Partner  
Blank Rome LLP



Certified Family Law Specialist Stacy D. Phillips is a partner in the Matrimonial and Family Law Practice in the Los Angeles office of Blank Rome LLP.

Phillips' former law firm, Phillips Lerner ALC, joined Blank Rome in 2016, bringing the talent and experience of one of the west coast's premiere boutique family law practices to Blank Rome, thus creating the only bi-coastal large firm family law practice in the country.

At Blank Rome, Phillips represents a wide variety of high net worth, high profile, and celebrity clients as they undergo the significant and often difficult changes involved in divorce and custody matters. She has guided clients through critical transitions in their lives for more than 30 years, with experience in all facets of family law, including: complex divorce actions, high-conflict custody cases, domestic violence cases, same-sex divorce/dissolution matters, paternity cases, and pre-nuptial and post-nuptial agreements. Phillips is also an author, noted philanthropist, sought-after commentator, panel moderator, and speaker.

**DEBRA E. POLE**

Partner  
Sidley Austin LLP



Debra Pole is a seasoned, award-winning trial attorney with extensive jury trial experience in both federal and state courts involving mass tort litigation,

class actions, and complex litigation. She is resident in Sidley's Los Angeles office where she is a true leader at the firm. She is a partner in Sidley's Los Angeles Litigation group, a former member of the firm's Executive Committee, and the Practice Group Leader for the Products Liability and Mass Torts Practice in Los Angeles, where she trains, supervises, and manages lawyers and paraprofessionals.

Pole is perhaps best known for supervising numerous defense law firms, both domestically and internationally, involved in complex pharmaceutical and medical device litigation. Further, she has had responsibility for national financial management of mass tort litigation. In addition, she has provided products liability counseling for companies planning to introduce new products into the marketplace and has extensive experience in early assessment and resolution of products liability matters.

**JENNIFER POST**

Partner  
Thompson Coburn LLP



As a partner in Thompson Coburn's Corporate and Securities practice, Jennifer Post serves as primary outside counsel to a variety of individuals,

institutions and companies, including entrepreneurs, venture capital firms and emerging companies, as well as domestic and international public companies.

Post's practice encompasses all areas of general corporate and securities law, including private placements of equity and debt securities, mergers and acquisitions, and venture capital fund formation. Post advises her company clients in many aspects of their businesses: capital raising, acquisitions, licensing and distribution, equity compensation, joint ventures and strategic partnerships. Post also represents investment entities including venture capital firms in their formation, fundraising efforts, governance and maintenance, as well as their transactions with emerging companies including complex investment structures, exit transactions and restructurings. Post has a unique niche representing technology lenders including venture debt lenders and hedge funds in secured transactions involving alternative asset classes. Post is also a leader in Thompson Coburn's newly formed Blockchain and Digital Currency practice area.



We join the *Los Angeles Business Journal* in honoring the

## Most Influential Women Attorneys in Los Angeles

including our partners and friends

**Ivy Kagan Bierman**  
and  
**Gabrielle Vidal.**

We salute your dedication to your clients and continued contributions to the field of law, paving the way for generations of women to come.



MOST INFLUENTIAL WOMEN ATTORNEYS

**ANGELA J. REDDOCK-WRIGHT**

*Managing Attorney  
Reddock Law Group*



**A**ngela Reddock-Wright is the founding and managing attorney of the Reddock Law Group, a boutique employment law firm based in downtown Los Angeles.

In the wake of the “Me Too” campaign, and more women coming forward to report claims of sexual harassment, Reddock-Wright has been a leading media commentator on this topic and has seen an increase in her practice in investigating and mediating claims of sexual harassment, along with conducting corporate trainings in this area.

Reddock-Wright considers her work in this area to be a part of creating better and more transparent work environments for women and men everywhere. Reddock-Wright is working with SAG-AFTRA to support its new 4 Pillars Sexual Harassment program and enhanced sexual harassment training for its members. Often called the “Workplace Guru,” Reddock-Wright is a leading authority on workplace issues. A practicing Employment and Labor Law attorney and litigator for nearly 20 years, Reddock-Wright now focuses her time on working with employers and employees to resolve their disputes.

**JENNIFER S. ROMANO**

*Partner  
Crowell & Moring LLP*



**W**hen the stakes are high and corporate reputations hang in the balance, some of the nation’s largest health care companies and other Fortune 500 companies call Crowell & Moring’s Jennifer Romano.

A partner in the firm’s Los Angeles office, co-chair of its nationally recognized Litigation Group, and a member of the firm’s Management Board, Romano has built a practice defending companies against consumer class actions and commercial litigation, particularly in the healthcare space. She regularly represents her clients in state and federal courts as well as in arbitration and mediation. Among her impressive client roster are major health plans and professional service firms.

With a long track record of success, the past 12 months have been particularly active. For example, in the fall, Romano first-chaired a three-week class action bench trial in federal court relating to fiduciary duties and other obligations under ERISA plans for tens of thousands of class members. This case is ongoing.

**COURTNEY ROWLEY**

*Trial Lawyer  
Trial Lawyers For Justice*



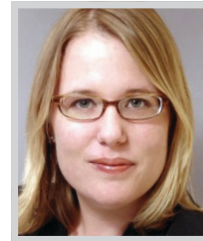
**C**ourtney Rowley is a trial lawyer at the law firm Trial Lawyers for Justice, a co-founding instructor of Trial By Human, a co-founder of

Trial by Woman, and soon to be author of the book “Trial by Woman” which will be released in 2018. She was the youngest graduate and youngest instructor in the history of Gerry Spence’s world renowned Trial Lawyers College in Wyoming, and has taught all over the country. She has tried difficult legal cases from coast to coast, winning multiple seven and eight figure verdicts for personal injury victims and their families.

In September 2017, she was one of the trial lawyers on Pellock v. Mississippi Valley Anesthesiology, which resulted in a \$10 million non-economic damages verdict. In November 2017, she was one of the trial lawyers on a case in Washington state that resulted in a record setting jury verdict of \$131 million. These are just two of many other major accomplishments and verdicts over the last year.

**TANA M. RYAN**

*Partner  
Kirkland & Ellis LLP*



**T**ana Ryan is the only female equity partner in Kirkland’s West Coast Private Equity Mergers & Acquisitions Practice Group, a status she

obtained by devoting more than 14 years to developing a deep career in the Private Equity and M&A field. She has extensive experience in connection with complex business transactions, dealing in a variety of industry sectors, including financial services, software and technology, and retail and franchised businesses, to name a few.

Among the highlights of her recent work, Ryan has represented H.I.G. Capital in several transactions including: its \$283 million tender offer for the acquisition of NCI Information Systems, a leading provider of enterprise solutions and services to U.S. government agencies; H.I.G. subsidiary Trinity Services Group’s acquisition of Keefe Group, one of the largest for-profit operators of prison and jail commissaries; H.I.G.’s acquisition of the Quicken business from Intuit Inc., a personal and small business financial software maker; and H.I.G.’s \$360 million take private acquisition of Lionbridge Technology, a translation software company.



**Congratulations**  
to our Labor & Employment Practice Co-chair

**Jennifer Woo Burns**

and to all of 2018’s  
**Most Influential Women Attorneys**

**ScaliRasmussen**  
AHEAD OF THE CURVE

(213) 239-5622 | scalirasmussen.com

**MOST INFLUENTIAL WOMEN ATTORNEYS**

**KELLI SAGER**

Partner  
Davis Wright Tremaine LLP



**K**elli Sager's passion for defending free speech and press rights has defined her legal practice. For more than three decades, she has championed

the First Amendment rights of the press and public, fought for transparency in government records and proceedings, and defended the rights of journalists and creative artists to pursue their professions.

She is one of the nation's top practitioners in a highly visible practice, which is partly why she has also been such a powerful role model for other women in the profession. She has represented some of the most prominent television and radio broadcasters, cable companies, motion picture producers and distributors, newspapers and magazines, book authors, internet companies, and web publishers, both at the trial and appellate level of federal and state courts. Her practice encompasses all areas of media and entertainment litigation, including defamation, privacy, idea submission claims, access, prior restraint, reporter's shield laws, copyright and trademark law, and Internet law.

**MISTY M. SANFORD**

Partner  
Munger, Tolles & Olson LLP



**R**epresenting such development giants as Tishman Speyer, Caruso Affiliated Holdings and Oaktree Capital in significant real estate transactions,

Munger, Tolles & Olson attorney Misty Sanford is playing a critical role in the explosive growth of Los Angeles and other major metropolitan areas. As a leader within the firm and legal community, Sanford is an influential figure known for her sophisticated and diverse practice involving all aspects of real estate, from sale and acquisition to finance, leasing and environment issues.

Sanford has advised on numerous transactions involving Los Angeles and Southern California clients and/or properties. Among these, she is currently representing the Broad in its continued development of public space and restaurant uses surrounding The Broad Museum, which anchors the redevelopment efforts to continue to revitalize and reimagine upper Grand Avenue in downtown Los Angeles. She also represented Caruso Affiliated Holdings, in obtaining construction financing for its high-profile Palisades Village mixed-use development; the refinancing of The Grove; and the refinancing of The Commons.

**LEONORA SCHLOSS**

Principal  
Jackson Lewis P.C.



**L**eonora Schloss is an equity principal at Jackson Lewis and has practiced employment law on the defense side for over 25 years. She helps

employers prevent and resolve disputes with their employees. Companies seek her advice on creating strong policies and making good decisions that will prevent lawsuits. If a lawsuit cannot be avoided, companies come to her to forcefully defend the company's interests. Schloss has substantial experience litigating single plaintiff and class action discrimination, harassment, retaliation, wrongful termination, and wage/hour cases in state and federal courts including jury and court trials. She routinely obtains summary judgment and summary adjudication through her tenaciousness and creativity in cases she defends.

Schloss has significant experience in the areas of wage and hour law, including defending wage and hour class actions. Significantly, a wage and hour representative class action case which she tried resulted in a reported decision that for the first time defined how minimum wage is calculated under California law.

**MILDRED SEGURA**

Partner  
Reed Smith LLP



**M**ildred Segura is a partner in the Los Angeles office of Reed Smith. She is a member of the Life Sciences Health Industry Group, practicing

in the area of product liability with particular emphasis on medical device, pharmaceutical and toxic tort litigation in state and federal courts, including class actions and multidistrict litigations.

As National Counsel in numerous high-profile actions, Segura has facilitated discovery efforts, formulated litigation strategy, retained and prepared expert witnesses, prepared and argued dispositive and pretrial motions, mediated cases and served on trial teams. She has handled a variety of matters in other industries involving automobiles, food and beverage, and welding products. She also has been involved in defending actions brought under the False Claims Act. She has deep experience in the full range of issues that regularly recur in product liability litigation as well as other types of complex litigation. Representative clients include top ten pharmaceutical and medical device companies, as well as petrochemical companies.

**RUSS AUGUST & KABAT**  
**CONGRATULATIONS**

Russ August & Kabat proudly congratulates our partner and colleague

**Irene Y. Lee**

on being named among the Los Angeles Business Journal's

**2018**  
**Most**  
**Influential**  
**Women**  
**Attorneys**



**Russ August & Kabat** provides sophisticated, creative and cost effective intellectual property, business and real property transaction and litigation counsel to our clients.

[www.raklaw.com](http://www.raklaw.com) 310.826.7474

12424 Wilshire Blvd. 12<sup>th</sup> Fl. Los Angeles, California 90025



**ALSTON & BIRD**

congratulates our colleague

**Nicki Carlsen**

on being named one of the  
**“Most Influential Women Attorneys”**  
by the *Los Angeles Business Journal*.

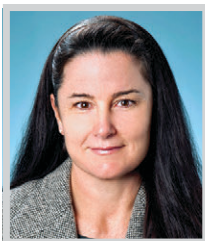
ATLANTA • BEIJING • BRUSSELS • CHARLOTTE • DALLAS • LOS ANGELES • NEW YORK  
RALEIGH • SAN FRANCISCO • SILICON VALLEY • WASHINGTON, D.C.

[www.alston.com](http://www.alston.com)

**MOST INFLUENTIAL WOMEN ATTORNEYS**

**JULIE A. SHEPARD**

*Partner; Content, Media & Entertainment Practice  
Jenner & Block LLP*



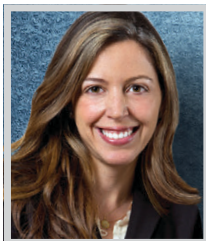
**A** partner in Jenner & Block's Content, Media & Entertainment Practice, Julie Shepard has defended her clients' rights

in multiple jurisdictions in copyright and trademark infringement cases, trade secret misappropriation actions, unfair competition claims, antitrust matters, shareholder derivative suits, class actions and profit participant cases. Her leadership is evident as she develops strategies involving new technologies, advanced media, internet law and privacy, and guides teams through the complexities of these matters for the benefit of clients.

Shepard is co-lead counsel in representing a television studio in a confidential matter involving what is colloquially referred to as a "profit participation" dispute over a popular television show. Shepard and the firm were successful in narrowing the scope of the claims against the client during the pre-trial phase, which also involved numerous contentious discovery motions. In the fall of 2017, the case went in front of an arbitrator for a multi-week hearing. Shepard is currently handling post-hearing motions on the case, which is expected to conclude this summer.

**LARA A. H. SHORTZ**

*Firm Recruiting Partner  
Michelman & Robinson, LLP*



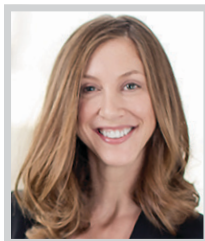
**O**ver the years, Lara Shortz has built an extraordinary practice and presence at her law firm, Michelman & Robinson, LLP. As M&R's new

firm recruiting partner, Shortz is tasked with managing the firm's robust yet measured growth. Toward that end, her thoughtful decision-making significantly impacts M&R's coast-to-coast operations.

At the same time, Shortz is a sought-after employment law practitioner, laser focused on the hospitality space. A member of M&R's renowned Hospitality Industry Group, she counsels and litigates on behalf of hotel and resort management, as well as clients in the food and beverage industries faced with single plaintiff and collective actions (class actions and PAGA claims) and administrative matters (like those before the State Labor Commissioner, Department of Fair Employment & Housing, Department of Labor, and Occupational Safety and Health Administration). Her clients are beneficiaries of her impressive track record of success in cases involving discrimination, harassment, retaliation, wage and hour matters and executive compensation.

**AMY SIEGEL**

*Partner  
O'Melveny & Myers LLP*



**W**hen the biggest brands in film, television, sports and theme parks want a lawyer who knows how to license and monetize their

most valuable assets, they turn to Amy Siegel. Having spent her entire legal career working in the entertainment industry, Siegel has become an authority on securing the acquisition, financing, protection and management of intellectual property and media-related assets that impact and influence today's pop culture. Her practice closely follows the industry's latest trends, from the growth of over-the-top services to new virtual reality ventures.

Not yet 40, Siegel has amassed a client list of some of the biggest names in Hollywood including Warner Bros., Univision, The Weinstein Company, and many others. She is a key player in O'Melveny's established practice of representing clients in and outside of Asia on cross-border media and entertainment deals. Amy also leads the firm's location-based entertainment practice, advising various clients on strategic opportunities involving theme parks and similar venues, both domestically and abroad.

**ANNE N. SLUSSER**

*Partner  
Meyer, Olson, Lowy & Meyers, LLP*



**A**nne N. Slusser was named a partner at the high-profile family law firm, Meyer, Olson, Lowy & Meyers (MOLM), in 2012. During her tenure

at MOLM, which began in 2002, Slusser has distinguished herself as one of the most dynamic and accomplished family law attorneys of her generation. With extensive experience and expertise in all aspects of family law, today she specializes in high-conflict custody disputes, cases involving domestic violence, and divorces with complex financial issues. Her representative clients include members of the entertainment industry, professional athletes, business owners, and other high-net-worth individuals.

In the practice of family law, Slusser found the ideal outlet for her combined passion for the law and psychology, which was her major as an undergraduate. Working with people who are going through perhaps the most difficult and painful experience of their lives, she brings sensitivity and intuition to the job along with an ability to connect with clients on a personal level.

**Buchalter**

**CONGRATULATIONS  
DAMARIS MEDINA**



**Damaris Medina, named one of the "Most Influential Women Attorneys in Los Angeles" by the Los Angeles Business Journal**



**Congratulations Janet Levine and Jennifer Romano**



**Recognized by the Los Angeles Business Journal as 2018 Most Influential Women Attorneys**

## MOST INFLUENTIAL WOMEN ATTORNEYS

**AMY SOLOMON***Partner*  
Girardi | Keese

**A**my Fisch Solomon, a partner with Girardi | Keese, specializes in the areas of professional liability, products liability and catastrophic injury.

She is a past president of the Consumer Attorneys Association of Los Angeles, the largest local plaintiffs bar association in the nation. She has successfully tried over 45 jury and bench trials in both State and Federal courts, and obtained numerous seven and eight figure verdicts and settlements on behalf of her clients. She is on the Board of Directors for the Inner City Law Center, the Western Justice Center and the Consumer Attorneys of California.

In addition to her busy practice, she had volunteered her time as a mediator, arbitrator and an early neutral evaluator for the Los Angeles Superior Court's Alternative Dispute Resolution Panel, and now does so privately. Solomon is a Commissioner for the California State Bar serving on the Judicial Evaluation Nominee Committee.

**SAMANTHA F. SPECTOR***Partner*  
Spector Law

**A**pproaching two decades as a high-profile litigator, Samantha Spector has become a deeply respected and influential attorney in the Los Angeles family

law community, and beyond. In family law, Spector has found the ideal outlet for her formidable skills given her selfless interest in helping people protect themselves, their assets and their custodial rights as they go through what is often the most difficult time in their lives. And nothing inspires her more than helping her clients find justice and empowerment through the legal system.

As one of the top family law attorneys in Southern California, Spector frequently handles high-asset marital dissolutions, legal separations, domestic partnerships legal issues, domestic violence restraining orders, parentage actions, complicated child custody and visitation matters, as well as cohabitation, prenuptial and postnuptial agreements. She has become known as one of the industry's fiercest litigators -- a reputation which has enabled her to successfully negotiate amicable resolutions on behalf of her clients against some of California's most powerful figures in finance, entertainment and sports.

**JULIA B. STRICKLAND***Partner*  
Stroock & Stroock & Lavan LLP

**A**s co-chair of Stroock's national Financial Services Litigation, Regulation and Enforcement Group managing 36 attorneys in

Los Angeles, New York, D.C. and Miami, Julia Strickland has built a strong reputation for being a leader in the representation of financial services companies having litigated all aspects of issues confronting the financial services industry, including lending and servicing, retail banking, unfair practices, insolvency, and federal and state regulatory compliance.

In addition to managing Stroock's Los Angeles office and sitting on the firm's executive committee, she has amassed a client list that includes the who's who of industry companies, such as American Express, CIT, Citigroup, Discover, JPMorgan Chase, HSBC, TransUnion, Synchrony, BMW Financial, USAA and PayPal. Last year, Strickland won summary judgment in favor of her clients BMW Bank of North America and BMW Financial Services NA, LLC, defeating a putative class action alleging over \$40 million in potential damages under the Telephone Consumer Protection Act, 47 U.S.C. Å§ 227.

**ELLIA THOMPSON***Partner*  
Ervin Cohen & Jessup LLP

**E**llia Thompson is a partner at Ervin Cohen & Jessup and serves on the firm's five-member Executive Committee. She chairs the firm's Land Use practice.

Thompson advocates for the rights of property owners, business owners, and developers all across Southern California. She works with real estate developers to craft the best project possible in terms of design, functionality, and compatibility with the neighborhood, and works with all stakeholders including elected officials, local businesses, neighborhood groups, charity organizations, and neighbors to achieve project approval. She understands that a successful outcome is more than building a project, it is about building a solid, positive reputation in each of the communities she serves. In addition to her law practice, Ellia also volunteers for a number of non-profit and charitable organizations and has also been honored by Connect LA and the Junior Chamber of Commerce for her commitment to community service by providing pro bono land use legal services to the Downtown Women's Center and its homeless women.

---

Congratulations to our  
Land Use Partner  
**Ellia Thompson**  
and to all the women  
named Los Angeles  
Business Journal's  
2018 Most Influential  
Women Attorneys.

---

**ERVIN COHEN & JESSUP** LLP  
ecjlaw.com

2018  
MOST  
INFLUENTIAL  
WOMEN  
ATTORNEYS



MOST INFLUENTIAL WOMEN ATTORNEYS

**POLLY TOWILL**

*Los Angeles Office Managing Partner  
Sheppard, Mullin, Richter & Hampton LLP*



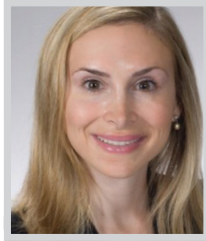
**P**olly Towill of Sheppard Mullin is recognized among clients and her peers as a “go-to” litigator, consistently earning exceptional

results in bet-the-farm lawsuits. Not only is Towill noted for her high-quality legal counsel, but also clients report on her ability to understand their business and take a pragmatic approach; they also single her out citing the praise for the personal attention she gives them. In addition to being the top female rainmaker at Sheppard Mullin, Towill is the office managing partner of the Los Angeles office, overseeing 180+ attorneys and 310 staff. She is also the leader of the firm’s Toxic Tort and Products Liability Team.

Recently, Towill has been at the forefront challenging the ability of securities class plaintiffs across the nation to plead and prove loss causation based on anonymous internet postings by short sellers. In addition to successfully defending securities class actions, she has developed an overall strategy for managing attacks by short sellers that negatively affect the stock of publicly traded companies.

**TAMMY A. TSOUMAS**

*Partner  
Kirkland & Ellis LLP*



**T**ammy Tsoumas is a highly regarded lawyer with a particular emphasis in antitrust and competition as well as toxic tort litigation matters.

Tsoumas has served as counsel to a number of high-profile clients in antitrust, toxic tort, and other commercial litigation matters, including Boeing, Guardian Industries, Avis Budget Group, DIRECTV, and Starwood Capital Group.

Among her recent representative matters is her work representing EVA Airways in a long-running MDL putative class action in which plaintiffs allege that airlines conspired to fix prices and fuel surcharges on transpacific flights from 2000 to the present. On behalf of the joint defense, Tsoumas argued an appeal regarding the filed rate doctrine at the Ninth Circuit in January 2017. A divided panel issued an opinion. The remaining defendants filed a cert petition in October 2017 and an amicus brief was filed in support of the petition. In February 2018, EVA and the plaintiffs reached a settlement as to the claims against EVA. The settlement is subject to final court approval.

**NICOLE RODRIGUEZ VAN DYK**

*Principal  
Bird, Marella, Boxer, Wolpert, Nessim, Drooks,  
Lincenberg, Rhow, P.C.*



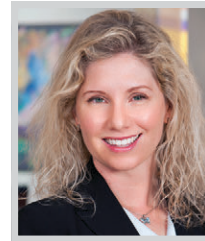
**N**icole Rodriguez Van Dyk concentrates her practice on the defense of white-collar criminal prosecutions, government and regulatory

investigations, and complex civil litigation. She advises clients on navigating the unique challenges of parallel criminal, civil, and regulatory proceedings.

A significant portion of Van Dyk’s practice is devoted to the representation of health care providers in state and federal criminal investigations and prosecutions, and parallel civil proceedings. She has successfully defended clients in a variety of related areas, including workers’ compensation fraud, false billing, improper referrals, compound medications, and physician-owned distributorships. She also has extensive experience defending clients in criminal matters related to government contracting fraud, mortgage fraud, and labor violations, as well as civil qui tam actions and business disputes. Van Dyk represents the president of a company charged by the Orange County District Attorney’s Office with a medical workers’ compensation fraud scheme. The California Court of Appeal dismissed of 89 out of 90 counts, and Van Dyk has continued to win victories in the ongoing case.

**ERICA J. VAN LOON**

*Partner and Head of Glaser Weil’s  
Trademark, Copyright and Media Practice  
Glaser Weil LLP*



**E**rica Van Loon is partner and head of Glaser Weil’s Trademark, Copyright and Media Practice. She has been instrumental in building the firm’s

national practice in trademark, copyright and trade secrets by achieving significant wins for high profile clients, such as the British Broadcasting Company, Bally Gaming, VIZIO, Conan O’Brien, Target Corporation, Walmart and others. She also manages the firm’s soft IP practice, which includes overseeing the bustling litigation docket, as well as managing the firm’s significant trademark prosecution practice.

As one example of her recent work, Van Loon was lead counsel for the BBC in two lawsuits involving trademark infringement and dilution of the famous Dancing With The Stars wordmark and logo and breach of and interference with BBC’s contracts with its professional dancers. Van Loon won partial summary judgment for BBC, including a complete dismissal of Defendants’ contract interference and trademark cancellation counterclaims, which led to the matter being resolved with a Consent Judgment and Permanent Injunction against Defendants.

**LATHAM & WATKINS LLP**



Congratulations to all of the *Most Influential Women Attorneys* honorees, including our partner **Pardis Zomorodi**

LW.com

Greenberg Glusker Congratulates All the *2018 LABJ Most Influential Women Attorneys honorees* Including Our Own



**Bonnie Eskenazi**



[www.GreenbergGlusker.com](http://www.GreenbergGlusker.com)  
Greenberg Glusker Fields Claman & Machtinger LLP

**MOST INFLUENTIAL WOMEN ATTORNEYS**

**GABRIELLE VIDAL**

*Co-Chair, Trust and Estate Litigation  
Loeb & Loeb LLP*



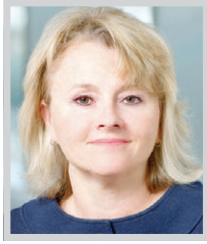
Whether it is a Hollywood headliner's widow like Cassandra Grey, or representing media moguls like Sumner Redstone, Loeb & Loeb's Gabrielle

Vidal is always at the center of major trust and estate litigation. Frequently securing full dismissals and litigating high profile private wealth disputes has earned Vidal an unrivaled reputation. Known for her success at trial, Vidal maintains a practice that is nearly unmatched in her peer group.

Vidal represents private and corporate fiduciaries, settlors, and individual and charitable beneficiaries. Her individual clients have included media figures and entertainment personalities and their family members involved in highly publicized controversies faced with intense media and public scrutiny. Vidal's expertise extends not only to her ability to navigate the complex legal and financial issues involved in trust and estate litigation, but also to her understanding and appreciation of the sensitive and emotional nature of these cases, and the psychological needs of her clients at the heart of these conflicts.

**DONNA L. WILSON**

*Partner  
Manatt, Phelps & Phillips, LLP*



As 2017 opened and privacy, data security and other consumer issues continued to explode, Donna Wilson, who leads Manatt's Privacy & Data Security

and Financial Services practices, was busy as lead counsel in navigating nationally-known companies through: a) worst case scenarios where a cyber or information security incident made the news and resulted in litigation and government investigations, (b) major bet-the-company cyber incidents that, through her skillful handling, neither made the news nor resulted in litigation or enforcement, and (c) risk management strategies and counseling designed to help other companies avoid both (a) and (b).

A go-to litigator, Wilson understands the delicate balance of protecting a company's most valuable information in the midst of litigation. She is a sought-after counselor for companies in crisis situations garnering national media attention, and is also brought in to help companies manage risk proactively by devising incident response plans and facilitating and participating in tabletop exercises.

**PARDIS ZOMORODI**

*Partner; Deputy Office Managing Partner  
Latham & Watkins LLP*



Pardis Zomorodi advises on transactional tax issues in notable deals, many of which have impact on the California economy, including: mergers,

acquisitions and spin-off transactions; taxation of corporations, partnerships and real estate investment trusts (REITs); formation of private equity funds and real estate funds; and securities offerings and financing transactions. Zomorodi also serves as the deputy office managing partner of Latham's Century City Office.

Zomorodi has extensive experience structuring taxable and tax-free mergers, acquisitions, dispositions and spin-offs for clients that include REITs, private equity funds, and media & entertainment companies. A highlight of her work on recent high-profile transactions is the representation of Entercom Communications in its \$4 billion merger with CBS Radio. The deal, which closed in November 2017, created the second-largest radio company in the US and involved the spin-off of CBS Radio by CBS and its acquisition by Entercom Communications in a "reverse Morris Trust" transaction.



Sidley congratulates our partner Debra Pole and all of the *Los Angeles Business Journal's* Most Influential Women Attorneys.

We are proud of Debra's many achievements, including her excellence in civil litigation as a premier trial lawyer, as well as her commitment to diversity and inclusion.

**TALENT. TEAMWORK. RESULTS.**



Los Angeles  
555 West Fifth Street  
Los Angeles, CA 90013

Century City  
1999 Avenue of the Stars  
Los Angeles, CA 90067



AMERICA • ASIA PACIFIC • EUROPE  
sidley.com

Attorney Advertising - Sidley Austin LLP, One South Dearborn, Chicago, IL 60603.  
+1 312 853 7000. Prior results do not guarantee a similar outcome. MN-8138



**Diversity and inclusion are fundamental to our success.**

Mintz Levin is honored to congratulate our Member

**Arameh Zargham O'Boyle**

on being named among the

2018 Most Influential Women Attorneys

by the *Los Angeles Business Journal*.

**MINTZ LEVIN**  
Mintz Levin Cohn Ferris Glovsky and Popeo PC

www.mintz.com

# Women Lawyers in Nepal Exchange Professional Experience with Peers U.S., Canada and Australia

Sixty women lawyers completed a six-day intensive training course, organized by Women Lawyers Joining Hands (WLJH) and the Nepal Bar Association (NBA), and supported by international law firms - DLA Piper and Symes Street and Millard, and by the United Nations Development Programme (UNDP). The training is part of a larger long-term initiative of WLJH and NBA to provide opportunities for Nepali women lawyers for professional development and high quality training.

“Our organization believes that female and male lawyers should be treated equally and have the same opportunities to enter leadership positions in the legal profession, government, state institutions, and judicial bodies, as prescribed in the Constitution,” said Sheri Meyerhoffer, the co-founder of WLJH. “Unfortunately, today women make up less than 10 per cent of the legal profession in Nepal and we are committed to support our Nepali colleagues in their efforts to achieve equality.”

Twenty-eight top lawyer trainers from Australia, Canada, U.S. and Nepal developed and delivered the training agenda. It was tailored to the needs and requests of the participants and covered advocacy skills focused on Nepal’s constitutional equality rights, international arbitration, intellectual property, and corporate and commercial law. The agenda also included sessions on principles of professional responsibility and legal ethics.

“This is rare opportunity for women members

of the NBA to get top quality training delivered by experienced national and international lawyer trainers, build relationships and expand their professional networks,” said Saroj Ghimire, National Trainer and Member-Secretary of Committee on International Bar Relations and Professional Development at the NBA.

“I signed up for this intensive training to get out of my comfort zone and learn about legal topics I haven’t explored enough. I see my future practicing law and every opportunity to learn and grow is precious. I also enjoy the interactions with more experienced colleagues,” said Swechhya Sangroula, course participant.

This is the second phase of the Women Lawyers Skills Enhancement Training. WLJH and NBA launched the first training in 2015 and it benefited 30 women lawyers. This year, the 2015 group enrolled in advanced six-day course. In addition, a new batch of 30 participants joined them to complete the basic course program, largely based on the 2015 curriculum.

#### WOMEN LAWYERS JOINING HANDS

“I participated in the 2015 training organized by WLJH and NBA and it changed my professional career. I worked for Municipal Association of Nepal before, but after the training I gained the confidence to pursue a career in commercial law and in the future I would also like to engage in advocacy for equality rights,” said Pushpa Tiwari, advanced course participant.

In addition to discussions about legal topics,

the agenda of the training provoked conversations about challenges specific to women in the legal profession in Nepal and elsewhere in the world. Participants agreed that there is a need to have more women lawyers engaging in pro bono work, particularly in the area of women’s rights, to litigate cases that advocate for laws and pol-

scholarships, bursaries, awards, and other forms of financial assistance, which is especially important in the early years of legal career. The organization also facilitates mentorship programs for women lawyers and supports development of professional networks, often initiated during trainings like this one.

**‘...where I practice law, women lawyers also face barriers practicing law. We are here to share our experiences and to assist Nepali women lawyers to develop strategies to ensure their full participation in the legal profession. It is time to give back.’**

icies to be gender friendly and fair. The trainers also shared their practice from around the world in effective ways of advocating for development and enforcement of equality laws.

“In Canada, where I practice law, women lawyers also face barriers practicing law. We are here to share our experiences and to assist Nepali women lawyers to develop strategies to ensure their full participation in the legal profession. It is time to give back,” said Beth Symes, international trainer from Symes Street and Millard.

Women Lawyers Joining Hands WLJH’s mission is to educate, train, coach, and mentor women lawyers in Nepal and help them access

International lawyer trainers from DLA Piper and Symes Street and Millard have been engaged in the initiative since the beginning. They developed the training curriculum and delivered the sessions entirely on pro bono basis.

“The energy and talent of the women lawyers in Nepal is truly inspiring. I am looking forward to working with them in the future and witnessing their success as legal professionals and advocates for equality,” said Sarah Mellows, international trainer from DLA Piper.

For more information about the activities of Women Lawyers Joining Hands visit [www.wljh.org](http://www.wljh.org).

manatt



**We salute you.**

Manatt is proud to congratulate our partners **Timi Hallem and Donna Wilson** on being named among the *Los Angeles Business Journal's* Most Influential Women Attorneys.

Manatt, Phelps & Phillips, LLP [manatt.com](http://manatt.com)

## ACCELERATING PROGRESS

Congratulations to our partner Elena Baca, Chair of our LA office and Vice Chair of our Employment Law department, and to all others recognized as the Most Influential Women Attorneys. We are inspired by your success and applaud your role in driving women’s leadership in the legal industry.



**PAUL HASTINGS**

Paul Hastings is a leading global law firm with a strong presence throughout Asia, Europe, Latin America, and the United States.

Paul Hastings LLP | [www.paulhastings.com](http://www.paulhastings.com)